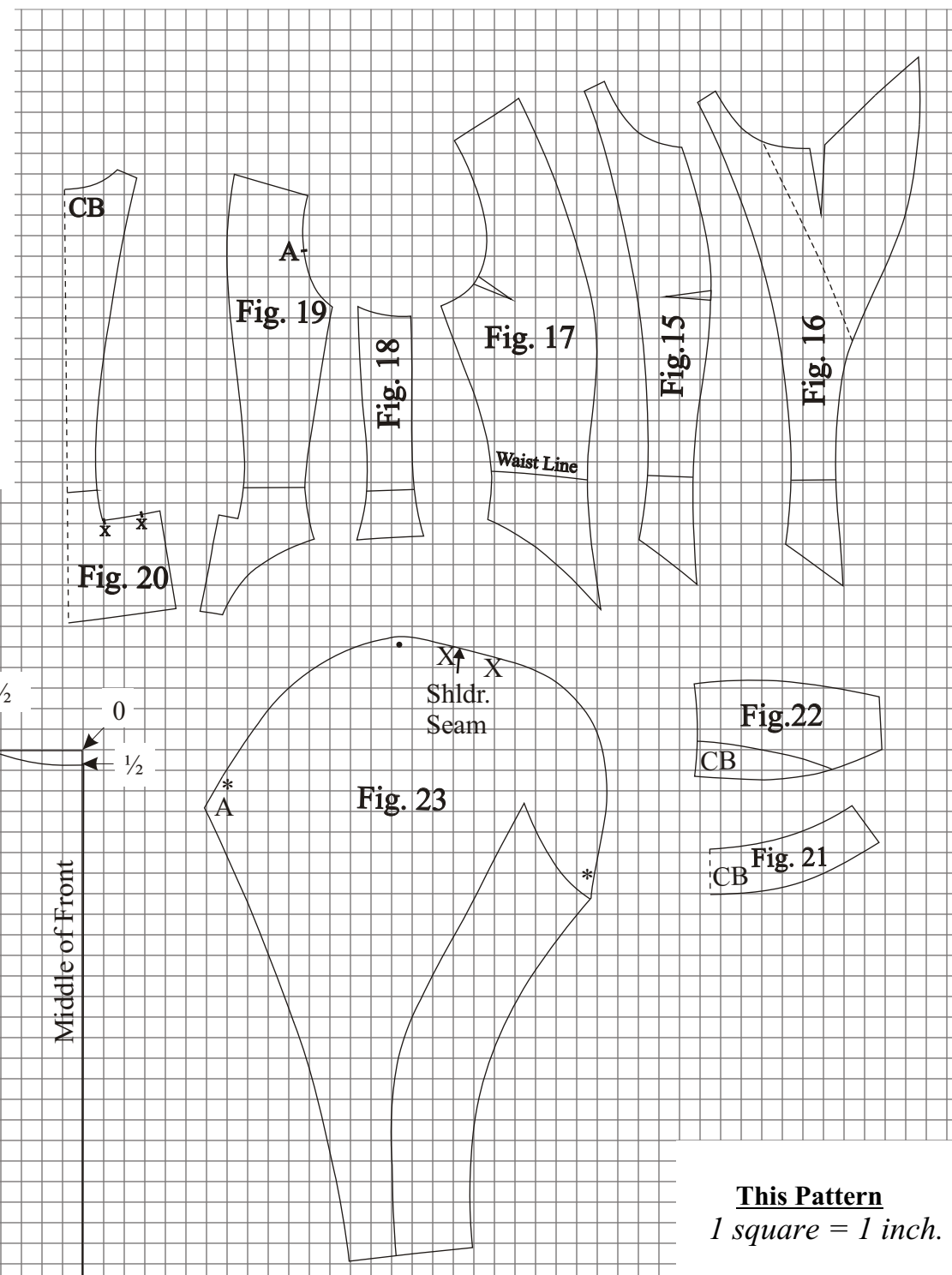
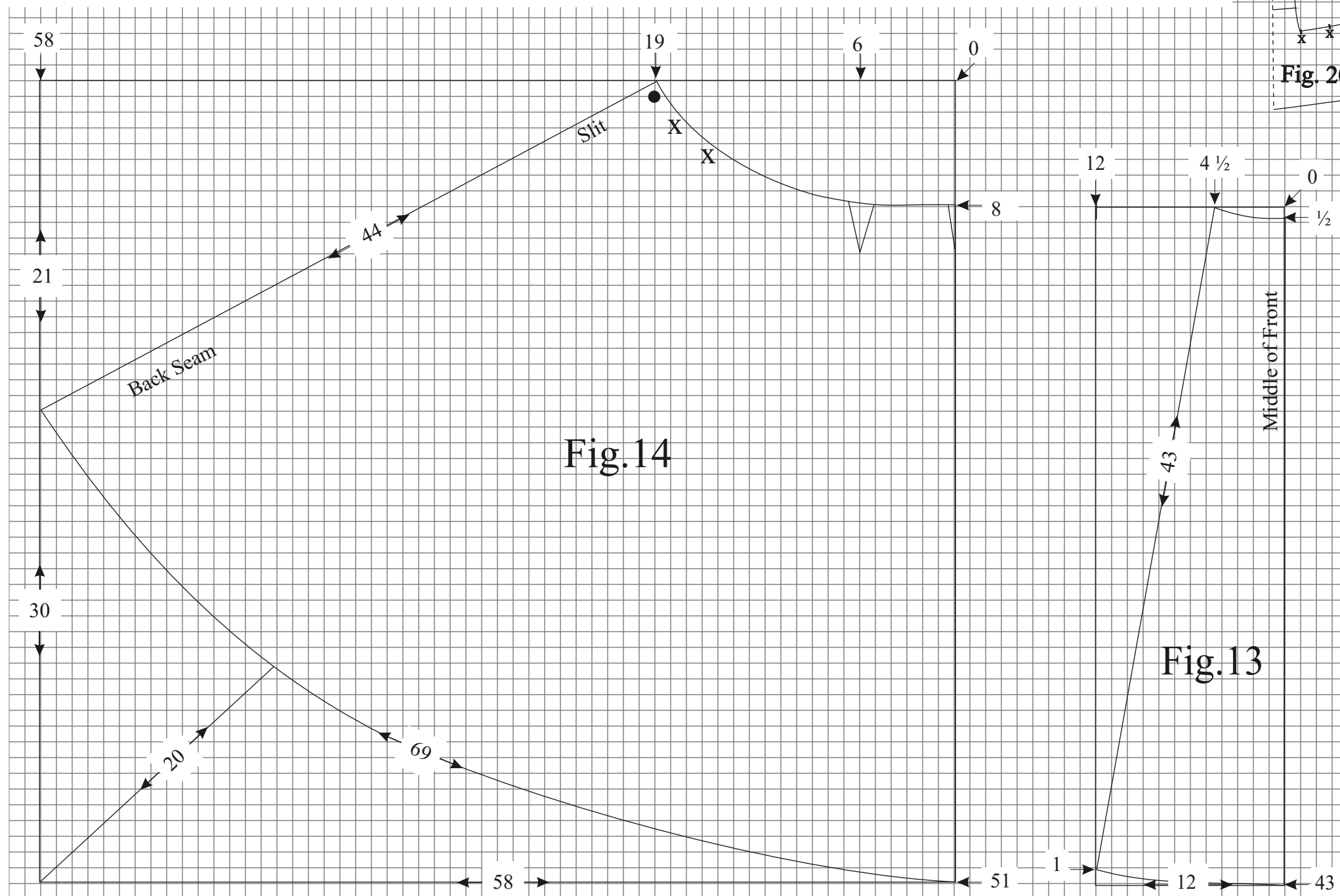


TAILOR GOWN WITH MOIRE VEST AND REVERS

from Harper's Bazar - January 2, 1897

The skirt, which is four yards and a half wide, has a narrow front and two wide back breadths. It has stiff interlining twelve inches deep around the bottom, and is trimmed at the bottom of the front breadth on the seam with a moire point twelve inches deep and three inches wide at the lower end, edged with braid. The fullness of the back is pleated in a double pleat on each side of the slit, bringing the points X to ●; the front is fitted by small darts.

The waist is a basque with pointed front and coat-tail back. The neck opens with moire-faced revers on a moire vest; the revers can be worn open wide or partially closed as illustrated. The moire vest has a box-pleat down the middle, covering the fastening, and the standing collar is of moire, while the turn-over collar is faced with moire, but showing an inch-wide margin of the cloth. Cut the lining for the first front from Fig. 15 and the outside from Fig. 16, and cut the back Fig. 20 without a seam at the middle. Take up the darts indicated, and join the parts according to corresponding figures. Add the standing and then the revers collar, and roll the revers along the dotted line. Cut the sleeves from Fig. 23, observing the slope of the under half; pleat the top in a box-pleat, bringing X to ●, and gather from the pleat to *. Sew the sleeves in with A meeting A on the waist.



This Pattern
1 square = 1 inch.

Material: 6 Yards of cloth, 1 1/2 yards of moire.
Bust Measure, 40 inches. **Waist measure,** 27 inches.

- Figs. 13 and 14. Skirt
- Figs. 15 and 16 Lining and Outside of First Front
- Fig. 17 Second Front
- Fig. 18 Side Form
- Figs. 19 and 20. Back Forms.
- Figs. 21 and 22 Standing and Turned-down Collar.
- Fig. 23 Sleeve.